



# HOT

HighOptimizedTechnology



**For daily electrical, mechanical, industrial  
and photovoltaic applications**

	THT8	THT80	THT120	THT200	THT300		THT400	THT500	THT600	THT600L	THT500H	THT600H
IR resolution	120x90 pxl	120x90 pxl	120x120 pxl	160x120 pxl	384x288 pxl		640x480 pxl	160x120 pxl	384x288 pxl	384x288 pxl	160x120 pxl	384x288 pxl
Temperature range	-20° ÷ 400°C	-20° ÷ 550°C	-20° ÷ 650°C	-20° ÷ 650°C	-20° ÷ 650°C		-20° ÷ 550°C	-20° ÷ 650°C	-20° ÷ 650°C	-20° ÷ 650°C	-20° ÷ 1200°C	-20° ÷ 1200°C
Image frequency	25Hz	50Hz	50Hz	50Hz	50Hz		25Hz	50Hz	50Hz	50Hz	50Hz	50Hz
Thermal sensitivity/NETD	<0.05°C @ 30°C / 50mK	<0.06°C @ 30°C / 50mK	<0.05°C @ 30°C / 50mK	<0.05°C @ 30°C / 50mK	<0.05°C @ 30°C / 50mK		<0.05°C @ 30°C / 50mK	<0.05°C @ 30°C / 50mK	<0.05°C @ 30°C / 50mK	<0.05°C @ 30°C / 50mK	<0.05°C @ 30°C / 50mK	<0.05°C @ 30°C / 50mK
Built-in visual camera	-	2 MP, focus free, built in LED light	2 MP, focus free	2 MP, focus free	2 MP, focus free		2 MP	5 MP, focus free	5 MP, focus free	5 MP, focus free	5 MP, focus free	5 MP, focus free
Picture in Picture	-	●	●	●	●		●	●	●	●	●	●
AutoFusion image enhancement	-	●	●	●	●		●	●	●	●	●	●
Accuracy	±3°C (±5.4°F) or ±3% of the reading	±2°C (±3.6°F) or ±2% of the reading	±2°C (±3.6°F) or ±2% of the reading	±2°C (±3.6°F) or ±2% of the reading	±2°C (±3.6°F) or ±2% of the reading		±2°C (±3.6°F) or ±2% of the reading	±2°C (±3.6°F) or ±2% of the reading	±2°C (±3.6°F) or ±2% of the reading	±2°C (±3.6°F) or ±2% of the reading	±2°C (±3.6°F) or ±2% of the reading	±2°C (±3.6°F) or ±2% of the reading
Field of view (FOV) / Focal lenght /Lens	50° x 38° / f 1.13 2.3mm	50° x 37° / f 1.13 2.3mm	15.6° x 15.6° / f 1.0 7.5mm	20.7° x 15.6° / f 1.0 7.5mm	41.5° x 31.1° / f 1.0 9mm		31.9° x 25.7° / f 1.0 9mm	17.3° x 13° / f 1.0 9mm	17° x 12.7° / f 1.0 22mm	9.8° x 7.3° / f 1.0 38mm	17.3° x 13° / f 1.0 9mm	17° x 12.7° / f 1.0 22mm
IFOV	7.29mrad	7.3mrad	2.26mrad	2.26mrad	1.89mrad		1.89mrad	1.89mrad	0.77mrad	0.45mrad	1.89mrad	1.89mrad
Focus mode	focus free	focus free	focus free	manual	manual		manual	manual	manual	manual	manual	manual
Digital zoom	-	1–32x continuous	1–32x continuous	1–32x continuous	1–32x continuous		1–32x continuous	1–32x continuous	1–32x continuous	1–32x continuous	1–32x continuous	1–32x continuous
Measurement tools (in live mode)	5 spots, center spot, hot/cold spots, 2 areas, 4 lines	3 spots, center spot, hot/cold spots, 3 areas, vertical and horizontal lines	none, center spot, 3 spots, hot/cold spots, 3 areas, vertical and horizontal lines, screening mode									
Area measurement information	max, min, AVG	max, min, center	max, min, AVG	max, min, AVG	max, min, AVG		max, min, AVG	max, min, AVG	max, min, AVG	max, min, AVG	max, min, AVG	max, min, AVG
IR Video recording	●	●	●	●	●		●	●	●	●	●	●
Measurement corrections	-	emissivity, reflected temperature, ambient temperature, atmospheric humidity, infrared compensation, distance compensation										
Color palettes	iron, rainbow, white hot, black hot, medical, artic, hot iron, fulgurite	iron, rainbow, white hot, black hot, brown hot, blue/red, hot/cold, feather, above max alarm, below min alarm, interval alarm										
Span modes	-	auto, manual, histogram	auto, manual, histogram	auto, manual, histogram	auto, manual, histogram		auto, manual, histogram	auto, manual, histogram	auto, manual, histogram	auto, manual, histogram	auto, manual, histogram	auto, manual, histogram
Laser pointer	-	-	-	-	-		-	●	●	●	●	●
Laser distance meter	-	-	-	-	-		-	●	●	●	●	●
Built in LED light	smartphone torch	●						●	●	●	●	●
Internal memory storage	smartphone storage	3,4 GB	3,4 GB	3,4 GB	3,4 GB		3,4 GB	3,4 GB	3,4 GB	3,4 GB	3,4 GB	3,4 GB
On-camera report building	-	text annotation	text annotation	text annotation	text annotation		text annotation	text annotation, voice annotation	text annotation, voice annotation	text annotation, voice annotation	text annotation, voice annotation	text annotation, voice annotation
Communication modes	USB type C	USB type C, Wi-fi, micro SD	USB type C, Wi-fi, micro SD	USB type C, Wi-fi, micro SD	USB type C, Wi-fi, micro SD		USB type C, Wi-fi, micro SD	micro USB, Wi-fi, micro SD, micro HDMI	micro USB, Wi-fi, micro SD, micro HDMI	micro USB, Wi-fi, micro SD, micro HDMI	micro USB, Wi-fi, micro SD, micro HDMI	micro USB, Wi-fi, micro SD, micro HDMI
Display	smartphone display	touch screen	touch screen	touch screen	touch screen		touch screen	touch screen	touch screen	touch screen	touch screen	touch screen
Battery operation time	-	3 hours	4 hours	4 hours	4 hours		4 hours	4 hours	4 hours	4 hours	4 hours	4 hours
Dimensions (L x W x H)	50 x 30 x 20mm	133 x 87 x 24mm	240 x 101 x 110mm	240 x 101 x 110mm	240 x 101 x 110mm		240 x 101 x 110mm	272 x 100 x 120mm	270 x 101 x 168mm	270 x 101 x 168mm	270 x 101 x 168mm	270 x 101 x 168mm

Technical specifications

# High Resolution

High resolution means maximum performance and versatility. THT400 represents the top of the range among HT thermal imaging cameras in terms of resolution, making it perfect for inspections on mechanical systems, electrical installations, HVAC systems and for high-level building inspections.

# HVAC/R Electrical & Mechanical application

HVAC, electrical and mechanical system maintenance are of prime importance. HT new entry-level range of thermal imaging cameras composed of THT300, THT200 and THT120 allows you to detect the most common problems affecting these systems.



ORDER CODE  
HNTH400



THT400

640x480 PIXEL TEMPERATURE RANGE -20°÷550°C FIELD OF VIEW 31.9°x25.7°

- PictureinPicture
- AutoFusion image enhancement
- Thermal sensitivity: <0.05°C @ 30°C / 50mK
- Compatible with HT Pro Camera



COMPATIBLE WITH  
HT PRO CAMERA

HIGH  
RESOLUTION  
640x480  
pxl



ORDER CODE  
HN000300



THT300

384x288 PIXEL TEMPERATURE RANGE -20°÷650°C FIELD OF VIEW 41.5°x31.1°

ORDER CODE  
HN000200



THT200

160x120 PIXEL TEMPERATURE RANGE -20°÷650°C FIELD OF VIEW 20.7°x15.6°

ORDER CODE  
HN000120



THT120

120x120 PIXEL TEMPERATURE RANGE -20°÷650°C FIELD OF VIEW 15.6°x15.6°

## COMMON FEATURES

- PictureinPicture
- AutoFusion image enhancement
- Temperature range: -20° ÷ 650°C
- Thermal sensitivity: <0.05°C @ 30°C / 50mK



COMPATIBLE WITH  
HT PRO CAMERA

High Resolution

Electrical&Mechanical



# Industrial application/ Utility

When it comes to industrial and high voltage applications, damages caused by poor maintenance of corrosion over time can be severe and very costly. Inspection and troubleshooting has to be of high quality. HT advanced thermal imaging cameras are perfect for this application.

# High Temperature

The higher the temperatures, the higher the risks. Thanks to HT advanced thermal imaging cameras specialized in high temperature measurement, you will operate safely in any environment.



ORDER CODE  
HN00600L



THT600L

384x288  
PIXEL

TEMPERATURE  
RANGE  
-20°÷650°C

FIELD  
OF VIEW  
9.8°x7.3°

ORDER CODE  
HN00600



THT600

384x288  
PIXEL

TEMPERATURE  
RANGE  
-20°÷650°C

FIELD  
OF VIEW  
17°x12.7°

ORDER CODE  
HN00500



THT500

160x120  
PIXEL

TEMPERATURE  
RANGE  
-20°÷650°C

FIELD  
OF VIEW  
17.3°x13°

## COMMON FEATURES

- PictureinPicture
- AutoFusion image enhancement
- Thermal sensitivity: <0.05°C @ 30°C / 50mK
- Laser distance meter
- Built in LED light
- Hand strap



COMPATIBLE WITH  
HT PRO CAMERA

ORDER CODE  
HN00600H



THT600H

384x288  
PIXEL

TEMPERATURE  
RANGE  
-20°÷1200°C

FIELD  
OF VIEW  
17°x12.7°

ORDER CODE  
HN00500H



THT500H

160x120  
PIXEL

TEMPERATURE  
RANGE  
-20°÷1200°C

FIELD  
OF VIEW  
17.3°x13°

## COMMON FEATURES

- PictureinPicture
- AutoFusion image enhancement
- Thermal sensitivity: <0.05°C @ 30°C / 50mK
- Laser distance meter
- Built in LED light
- Hand strap



COMPATIBLE WITH  
HT PRO CAMERA

HIGH  
TEMPERATURE  
1200°C

Industrial application

High Temperature

# Compact & pocket sized

Small and excellent, HT infrared technology is now pocket-sized. With your compact IR camera you can easily and quickly carry out your inspections at any time.



ORDER CODE  
**HN008000**



## THT80

**120x90**  
PIXEL

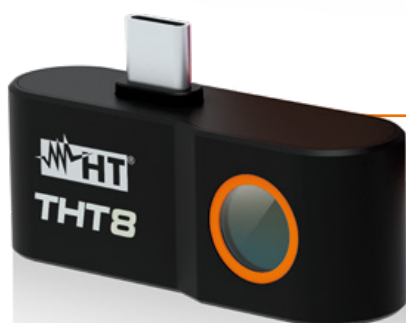
TEMPERATURE  
RANGE  
**-20°÷550°C**

FIELD  
OF VIEW  
**50°x37°**

- › AutoFusion
- › Touchscreen



COMPATIBLE WITH  
**HT PRO CAMERA**



ORDER CODE  
**HN000080**



## THT8

**120x90**  
PIXEL

TEMPERATURE  
RANGE  
**-20°÷400°C**

FIELD  
OF VIEW  
**50°x38°**

- › Android compatibility
- › USB type C



COMPATIBLE WITH  
**HT SMART CAMERA**



**HT ITALIA S.R.L.**

Via della Boaria, 40 48018 Faenza (RA) Italy

**T** +39 0546 621002 | **F** +39 0546 621144

**M** export@ht-instruments.com | **ht-instruments.com**